

## REHAB CHALLENGE

A 45 years old housewife, doing active household chores, presented with constant dull aching pain and gradual bowing of both knees for past 2 years, increasing in severity day by day. Knee pain is aggravated by working, squatting, climbing stairs and relieved partially with rest. On examination, there was joint line tenderness, crepitation, with varus deformity of knee. Her skiagram showed, tri-compartmental osteoarthritis with Kellgren-Lawrence grade-4. She was initially managed conservatively with medicine and modalities but there was very little improvement. She was advised Total knee replacement which she refused. We gave a trial of Hylan GF 20 which improved VAS score from 8 to 7. She is still struggling to manage her daily life.



Fig 1

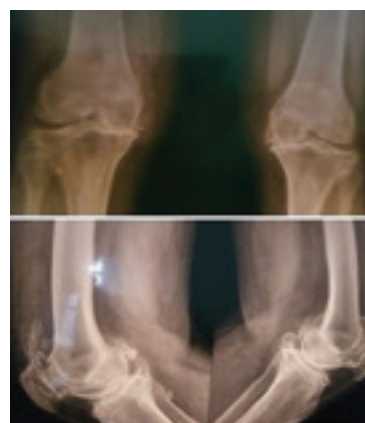


Fig 2

Please opine about further management action of the patient

## Medical Philately

Issued by Sri Lanka on Dec. 3, 2009



<b>Country / Post</b>	Sri Lanka
<b>Date of Issue</b>	3 December 2009
<b>Primary theme</b>	Medicine (Disabilities)
<b>Subject</b>	International Day of Persons with Disabilities
<b>Width</b>	40.0 mm
<b>Height</b>	30.0 mm
<b>Denomination</b>	10.00 LKR
<b>Number in set</b>	1
<b>Layout/Format</b>	sheet of 100
<b>Perforations</b>	14 by 14
<b>Stamp issuing authority</b>	Department of Posts
<b>Printer</b>	Department of Government Printing, Sri Lanka